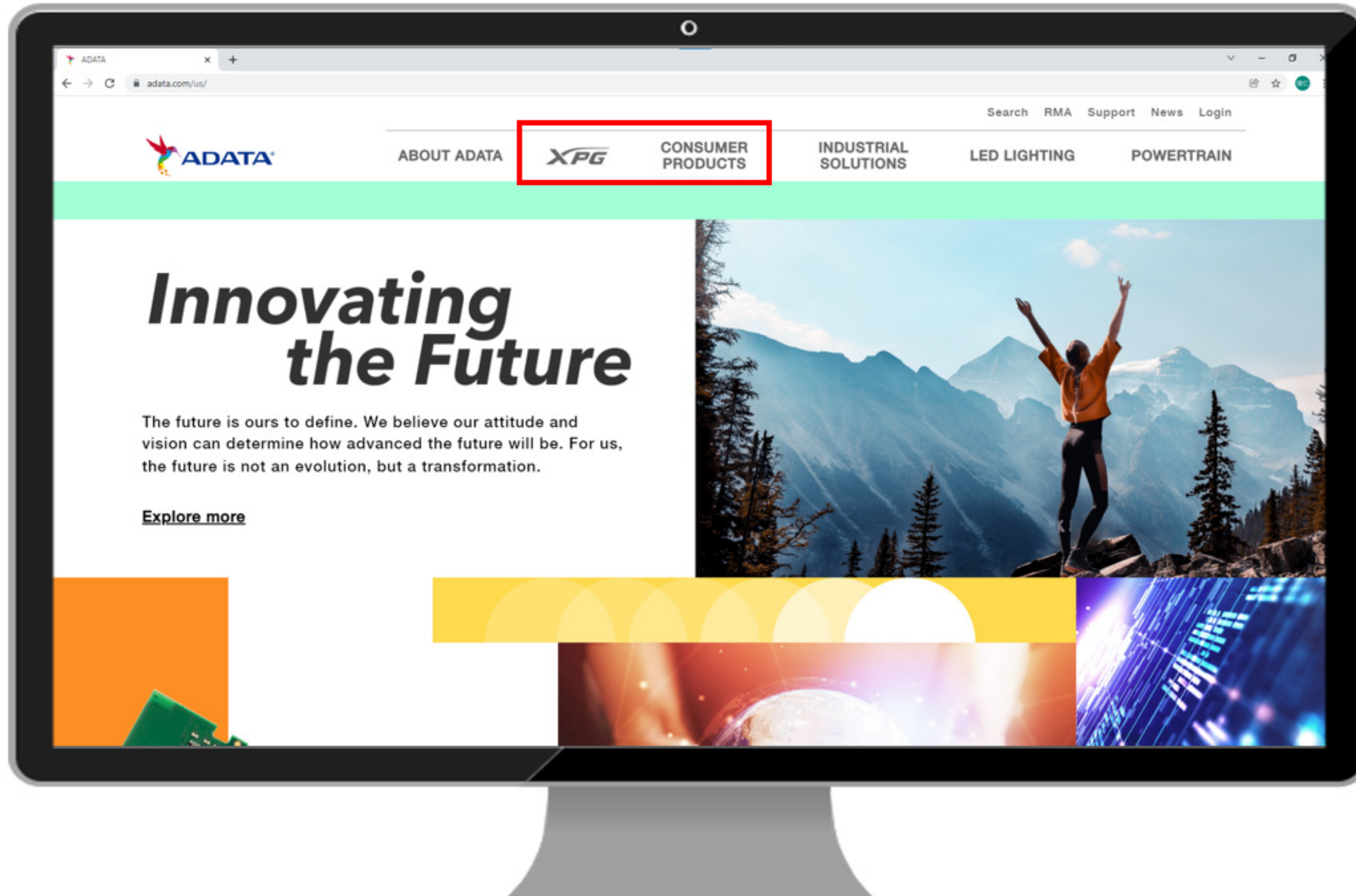


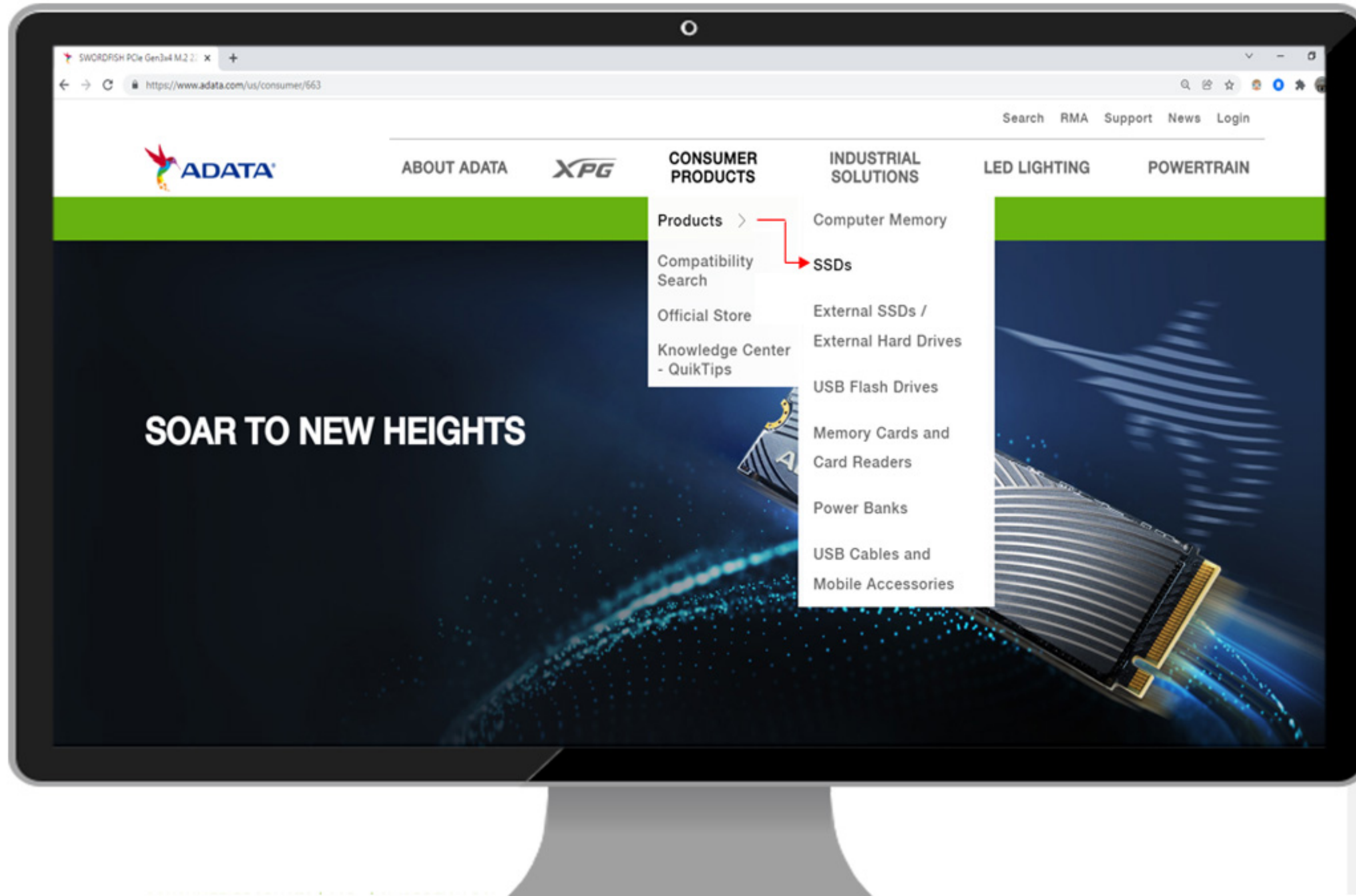
Go to our website

Go to www.adata.com/us/ and select the brand of your SSD.
“XPG” or “CONSUMER PRODUCTS” for ADATA SSDs.



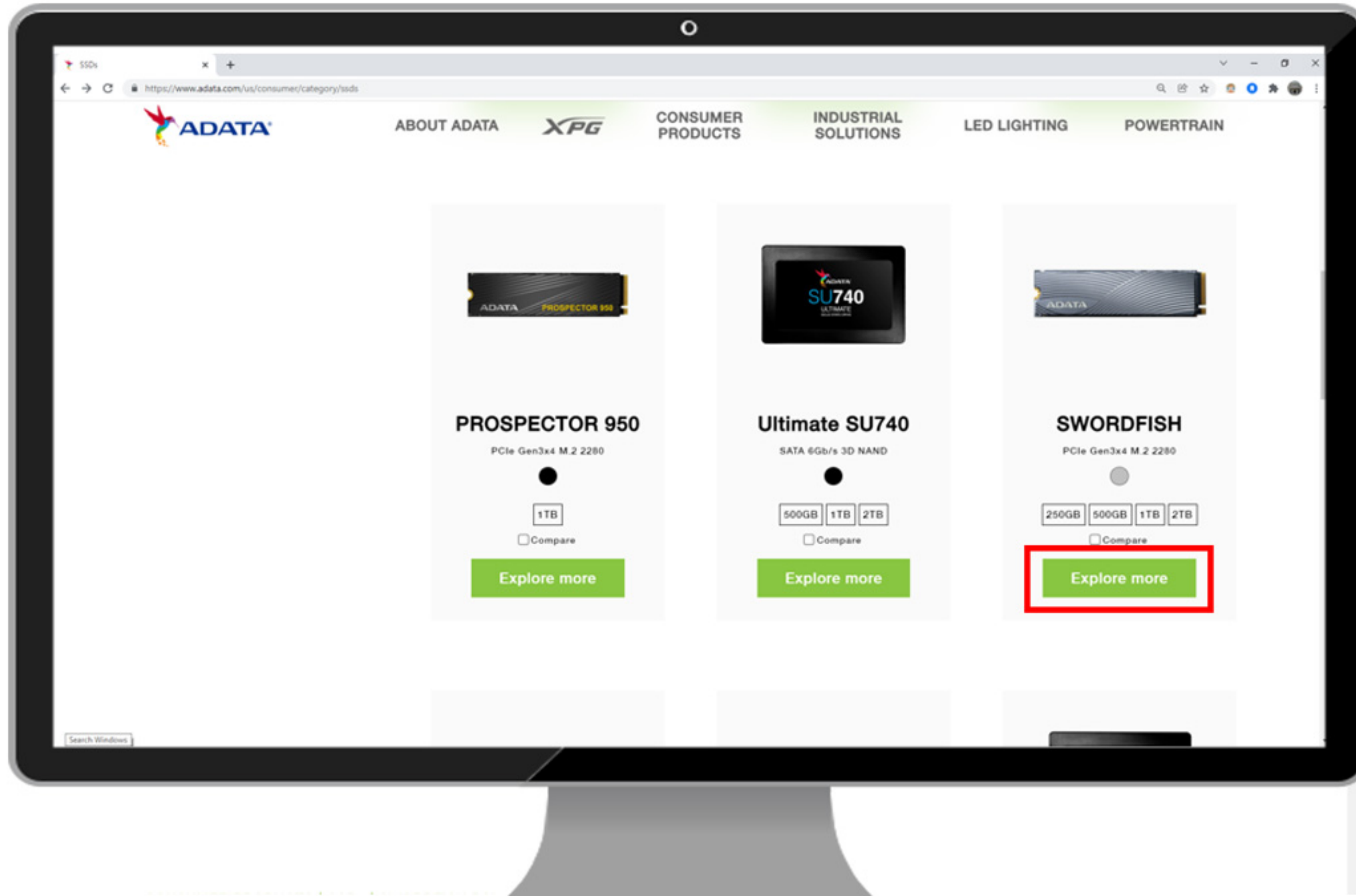
Find your product's webpage

On the dropdown menu
select “Products >” and then “SSDs.”



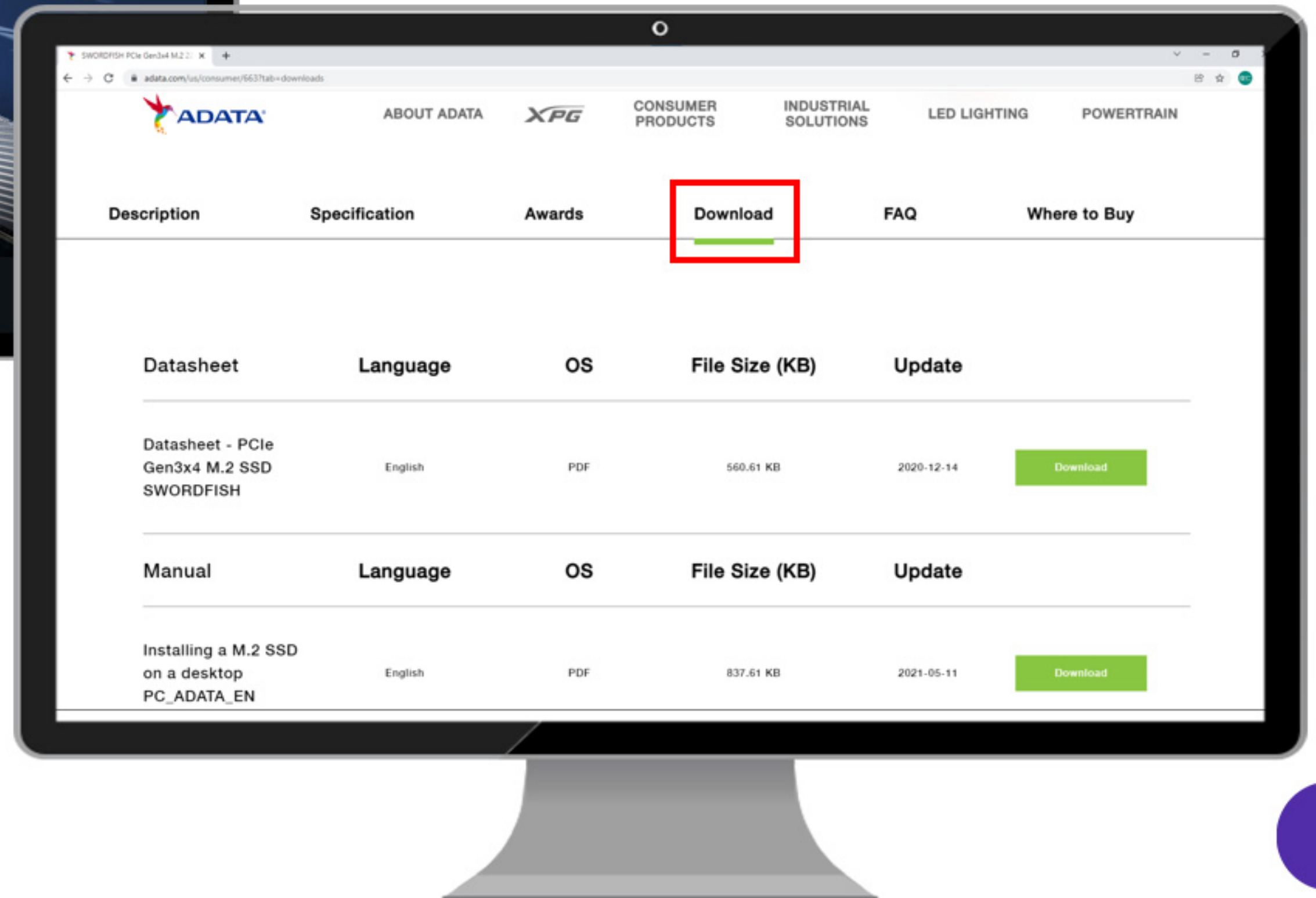
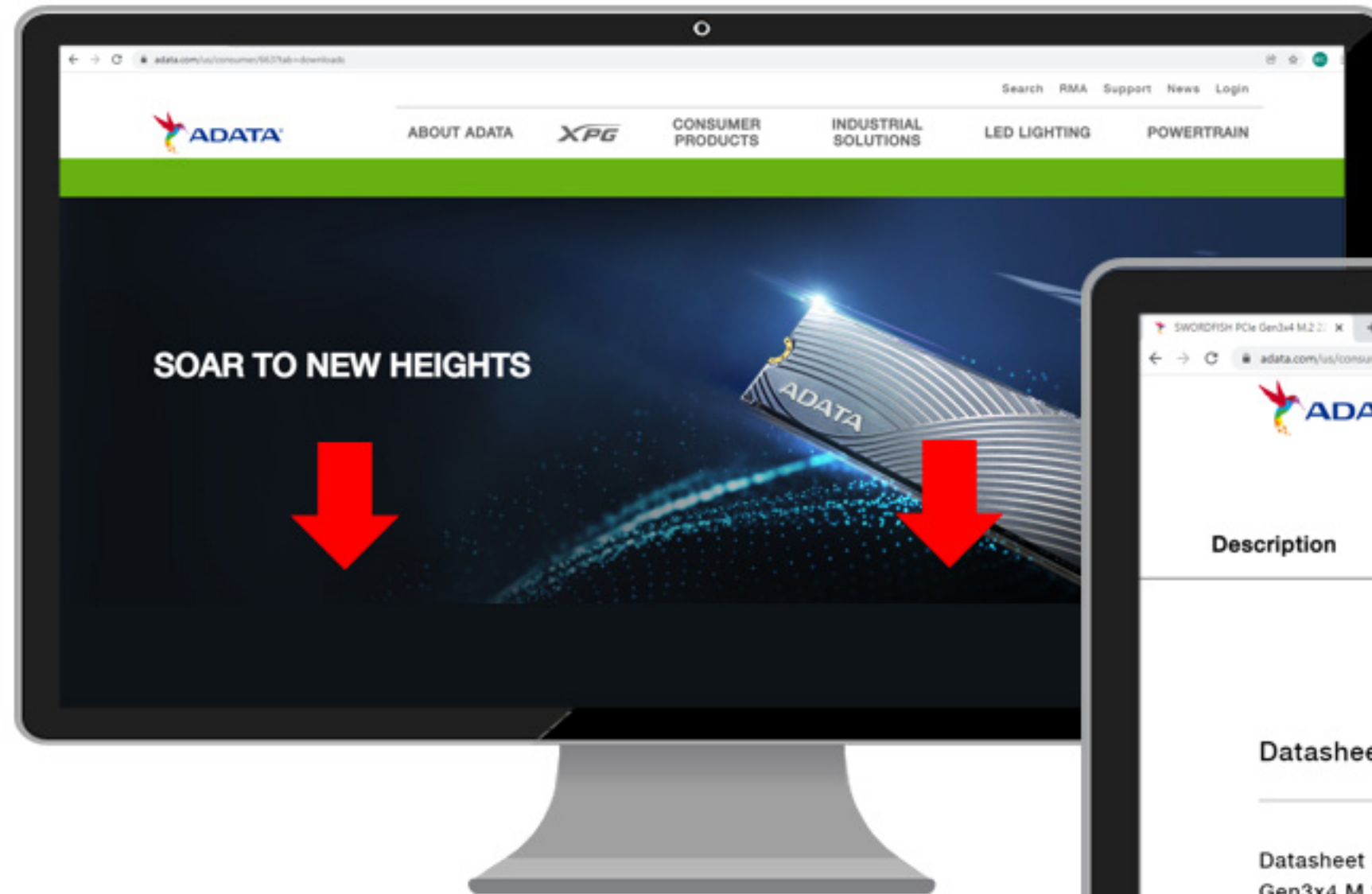
Find your product's webpage

Find your SSD model and click
“Explore more” to enter its webpage.



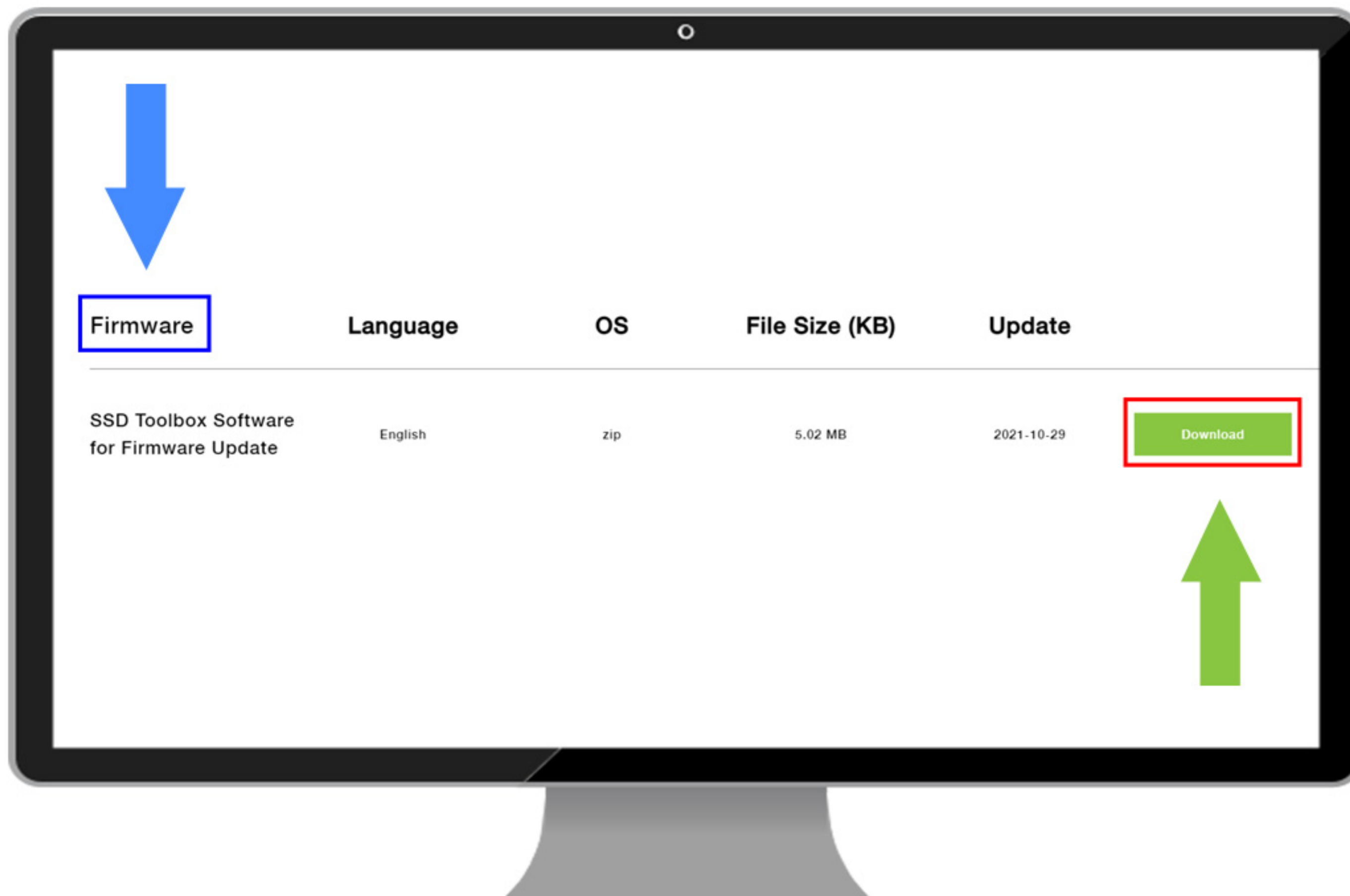
Download ADATA SSD TOOLBOX

Scroll down to the middle of the product's webpage and select "Download."



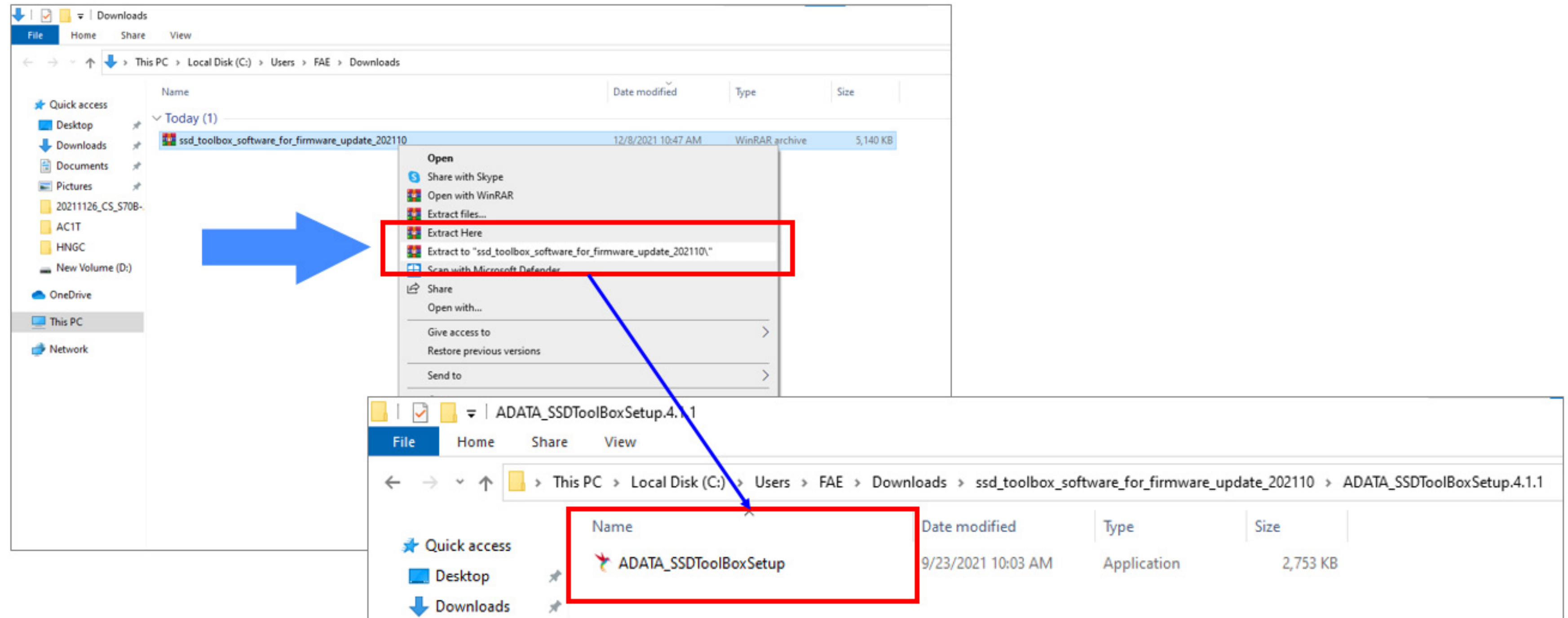
Download ADATA SSD TOOLBOX

Under “Firmware,” locate SSD ToolBox Software and click the “Download” button on the right.



Install ADATA SSD TOOLBOX

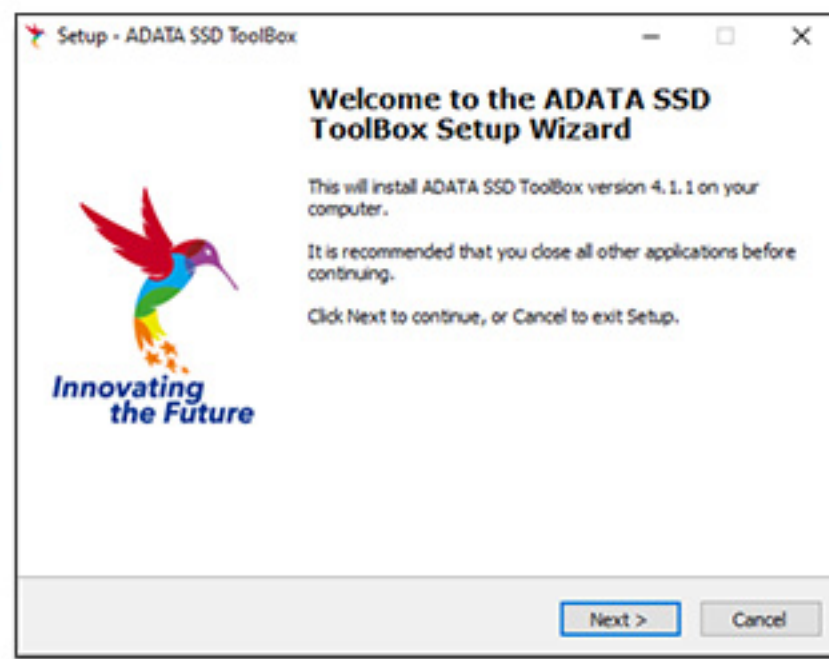
Decompress (unzip) the downloaded file
“ADATA_SSDToolBox setup” and execute.



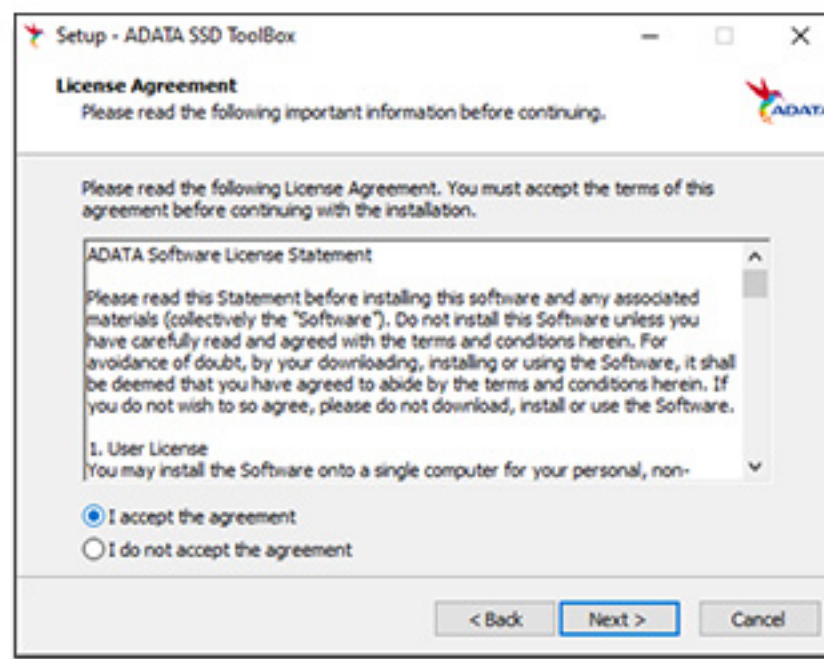
Install ADATA SSD TOOLBOX

Follow the steps to install ADATA SSD ToolBox.

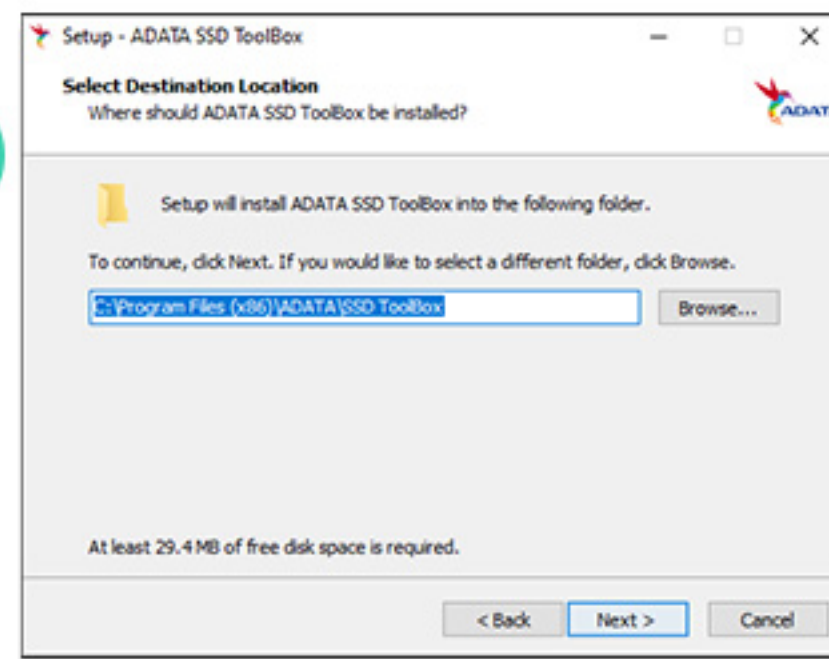
STEP
1



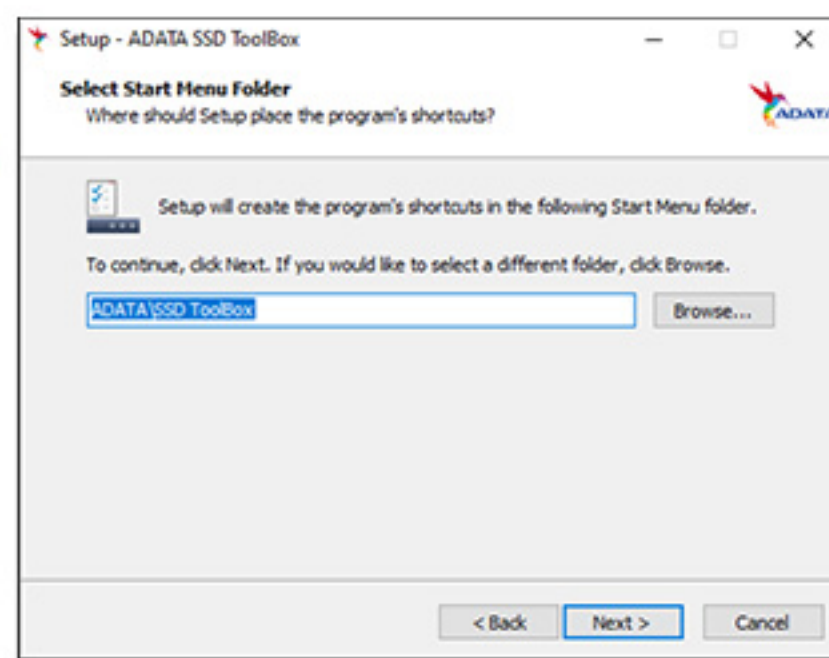
STEP
3



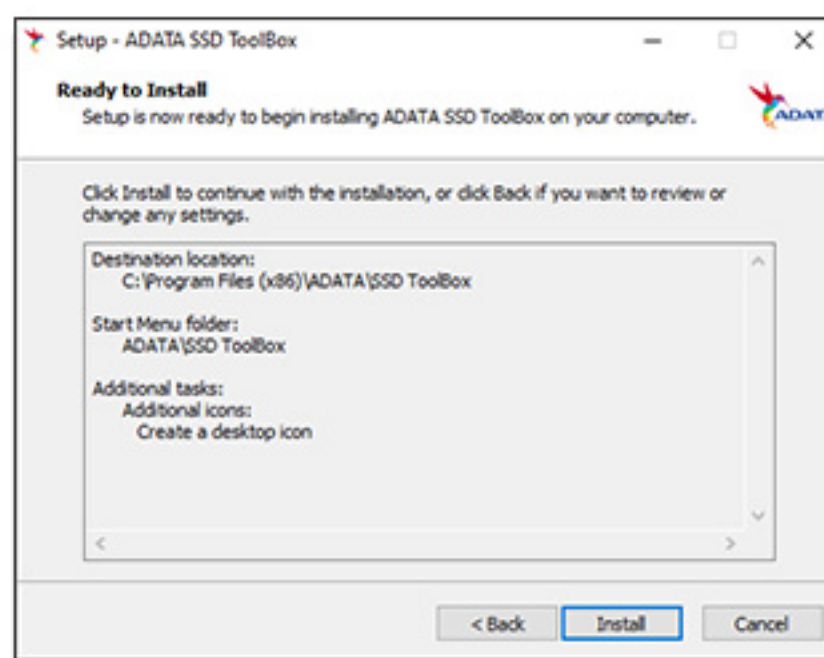
STEP
5



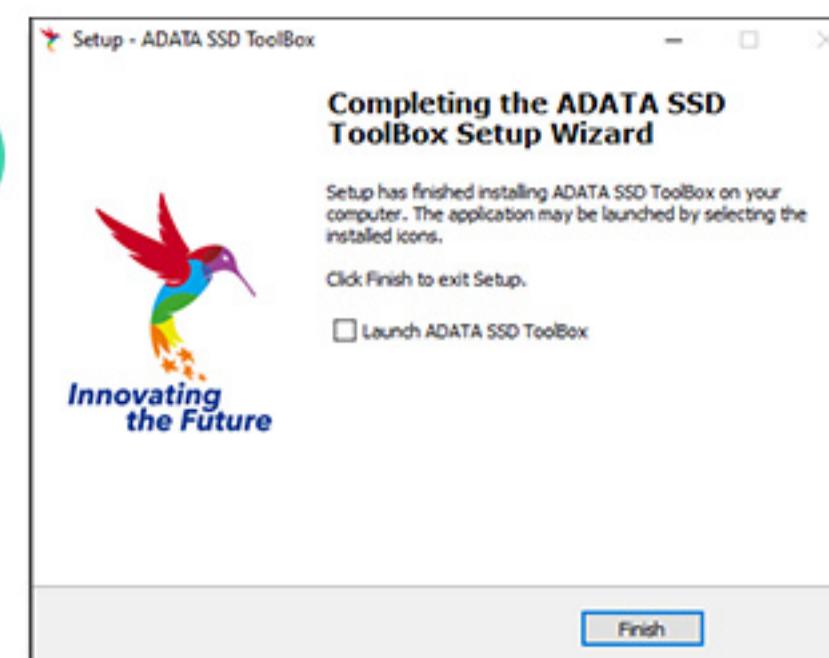
STEP
2



STEP
4

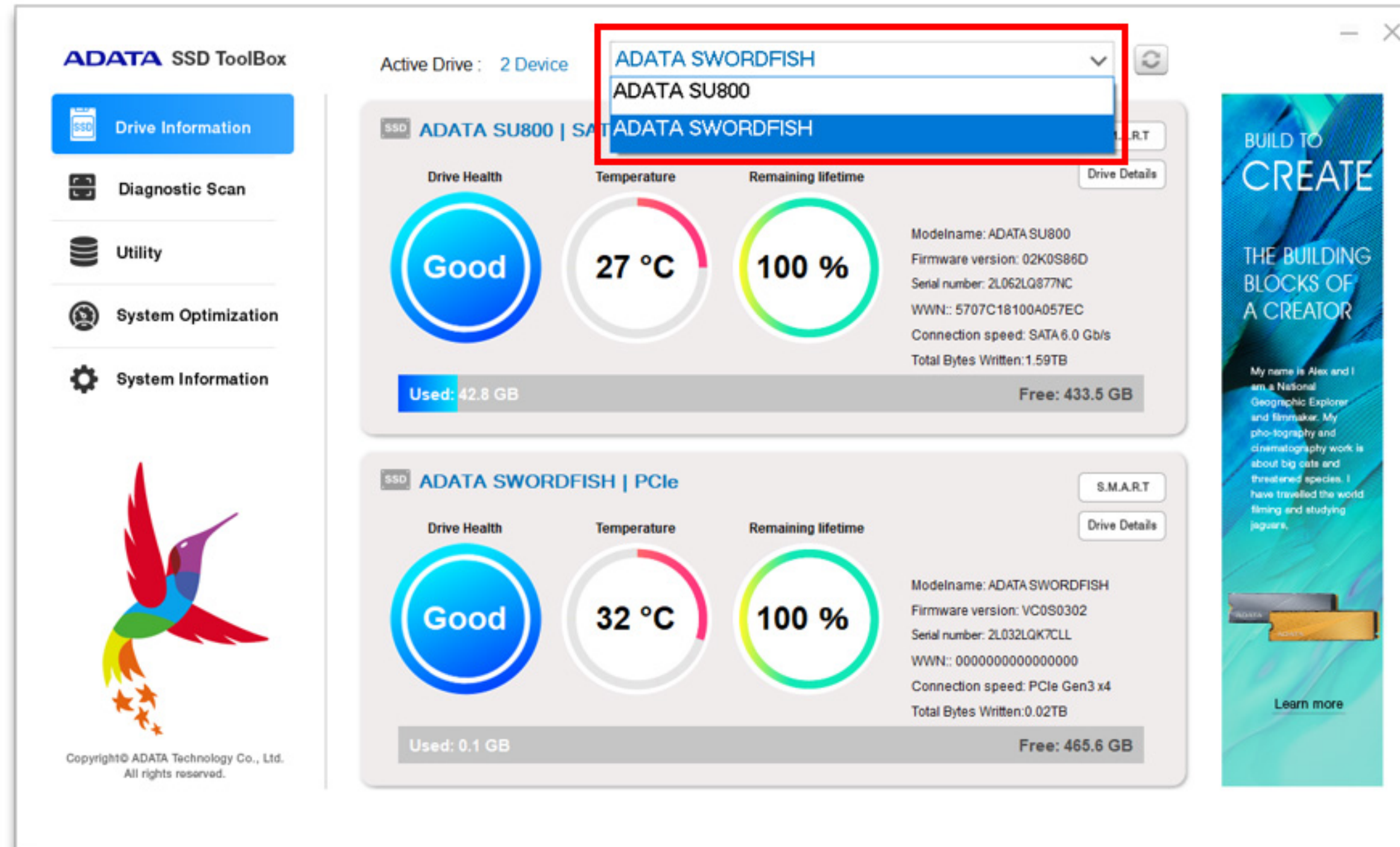


STEP
6



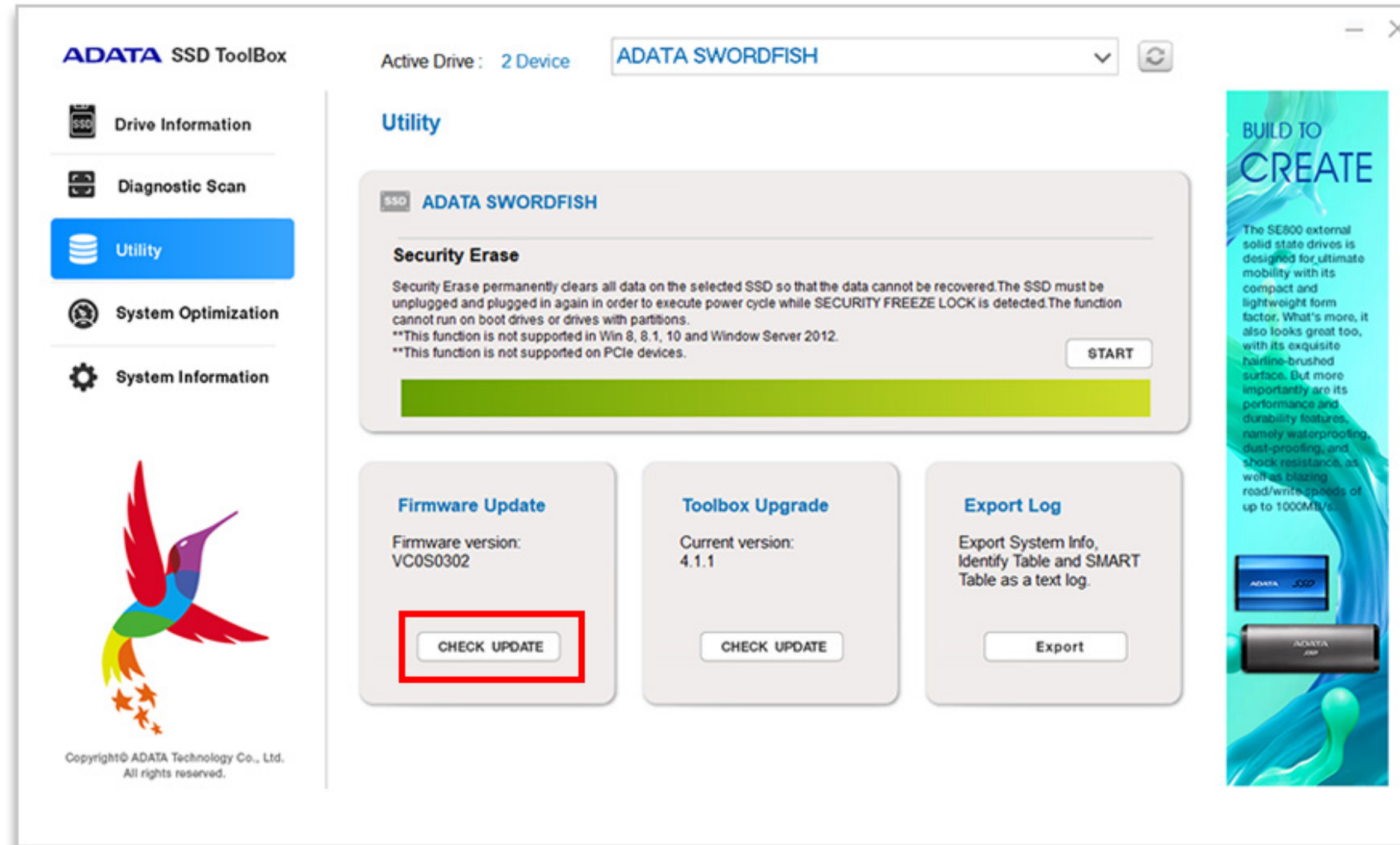
Update firmware

On ADATA SSD TOOLBOX, select your SSD on the dropdown menu.



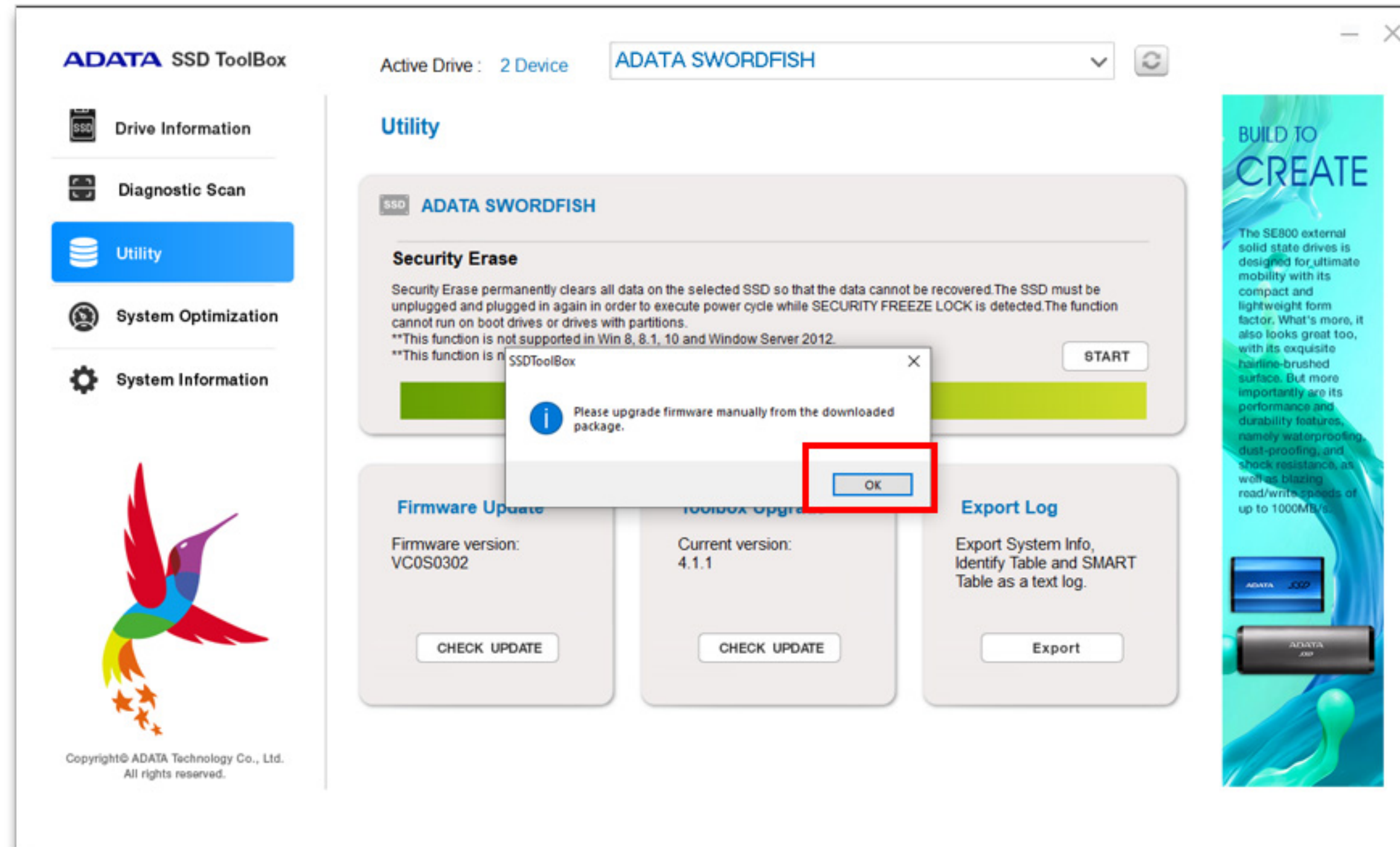
Update firmware

Click “Utility” on the menu and then “CHECK UPDATE” under Firmware Update.



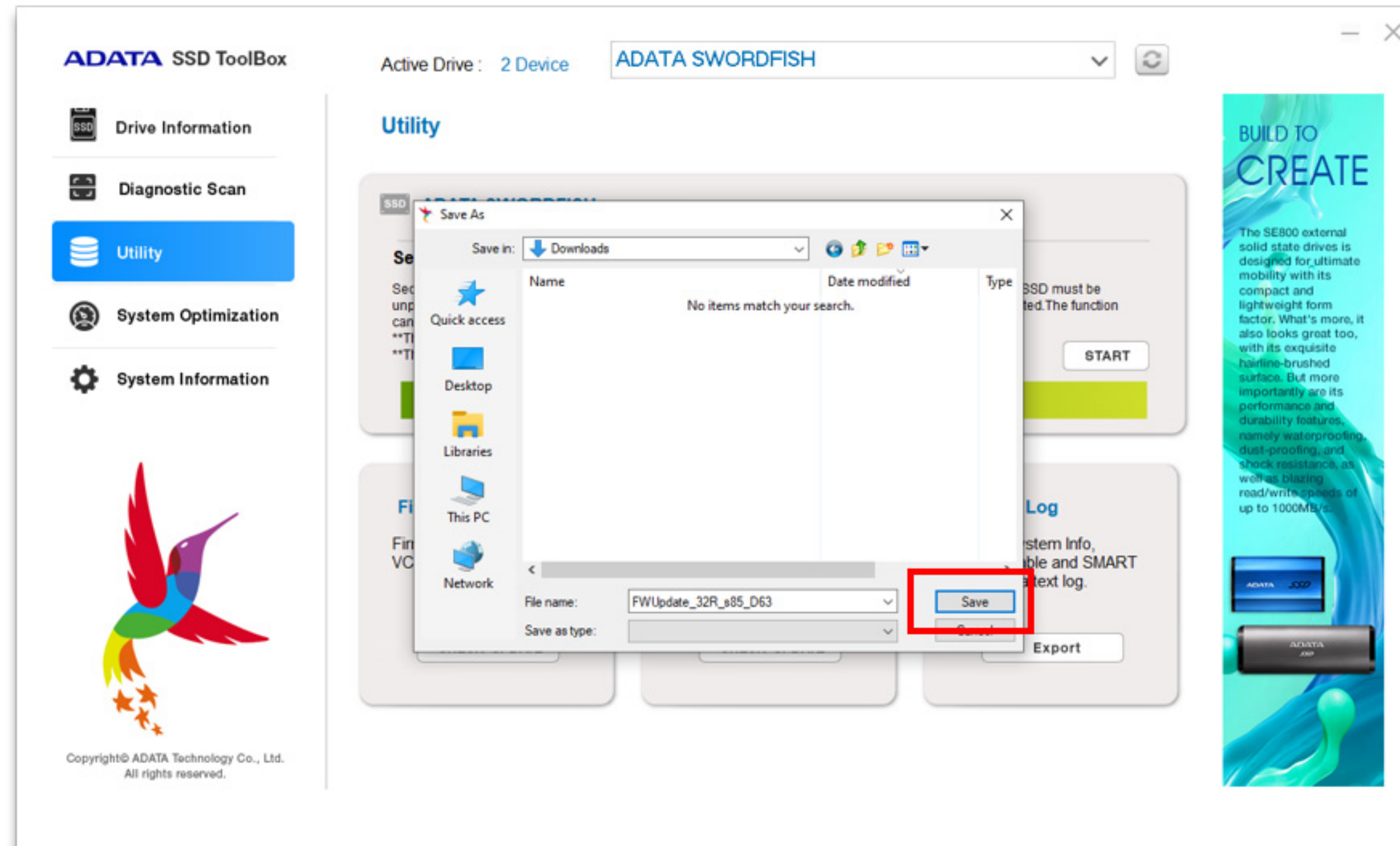
Update firmware

On the preceding pop up window, click “OK.”



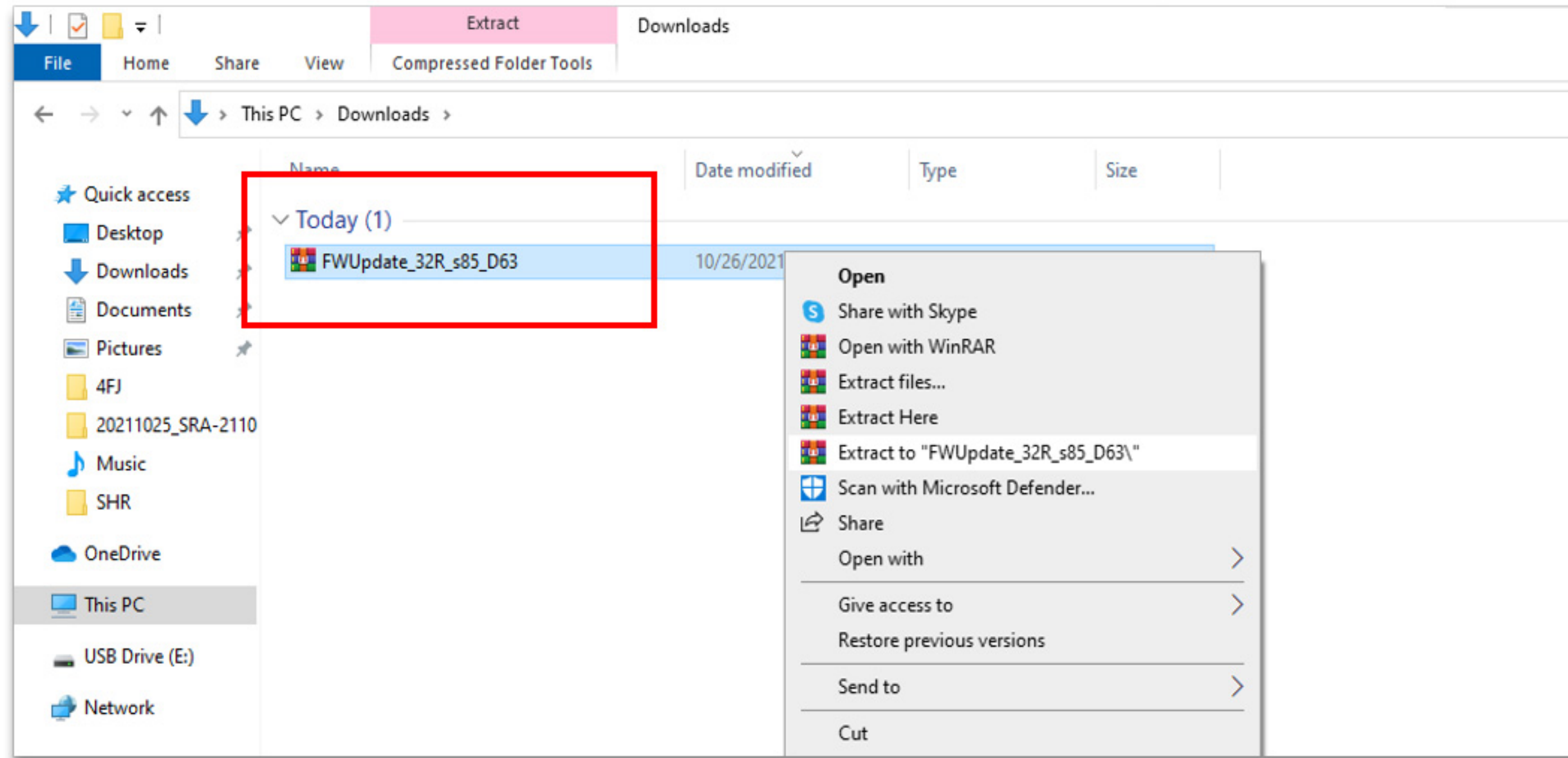
Update firmware

Select the desired save path and then click “Save.”



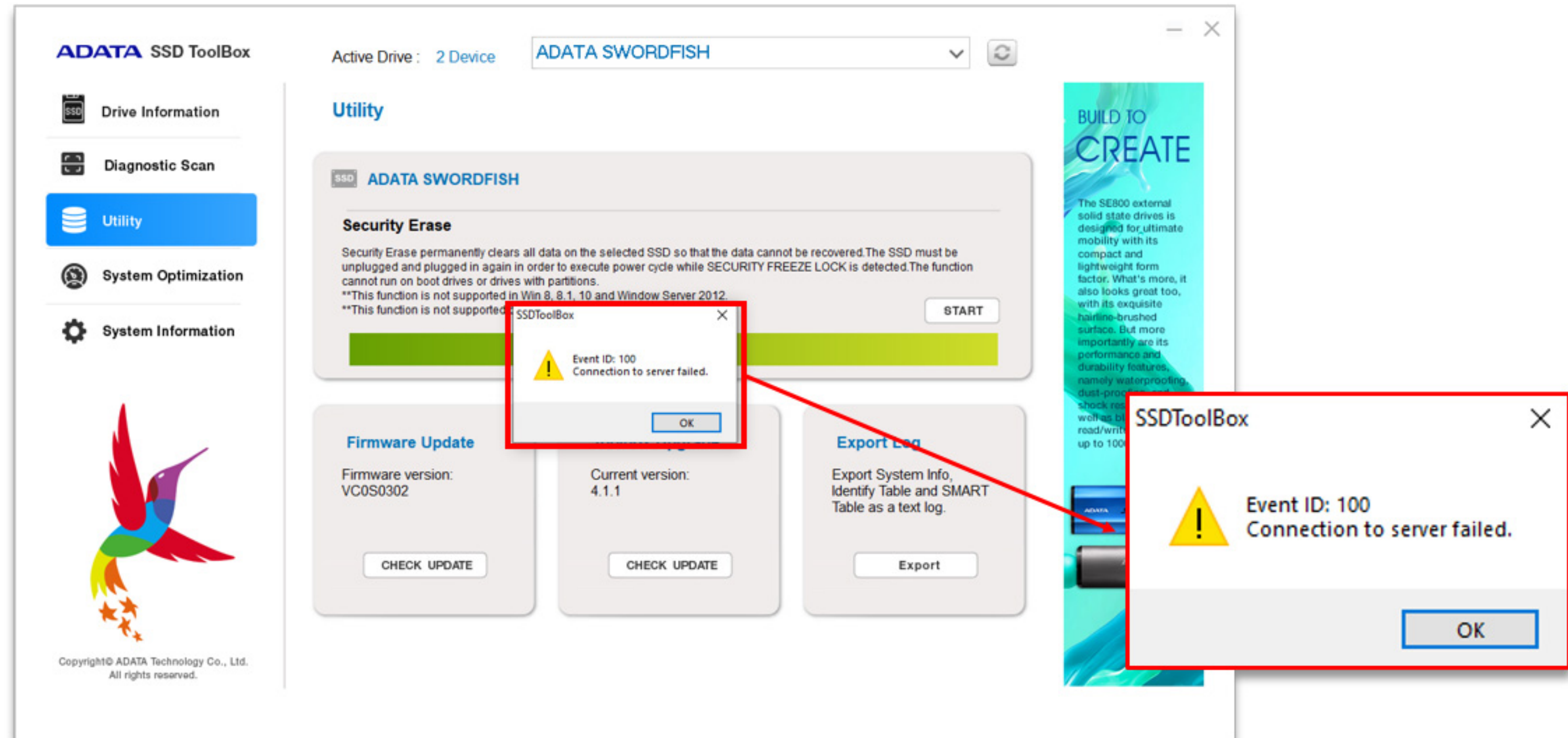
Update firmware

Extract the firmware updater and follow the user guide to update firmware.



Check internet connection

Please confirm you have an internet connection before proceeding, or else you will get this error message.



You're done!

You now have the latest firmware version. You're done!

