



Wireless life

# User Manual



7/24 people support  
0845 557 5782 (from United Kingdom)  
+90 212 444 0239 (International)

# Contents

<b>AirTies Air2410v2 Documentation</b>	<b>1</b>
Manual Overview	1
Safety and Maintenance	1
Status LEDs	1
Installation Settings	2
Loading the driver	2
Connecting to the Wireless Network	3
Windows XP and Vista	3
Windows 7	3
Uninstalling the driver	3
Device Properties	4
Technical Specifications	4
Physical Characteristics	4



# AirTies Air2410v2 Documentation

This manual has been prepared by AirTies Wireless Networks Corporation. All rights reserved.

## Manual Overview

This manual guides you through the steps necessary for setting up and configuring your AirTies device. Please read this manual carefully before beginning the installation process.

The Warranty does not cover failure or damage as a result of not following the instructions in the manual. AirTies will not be held responsible in such circumstances.

The User Manual is an important resource you can refer to for safe and proper use of your device. Please retain it for future reference.

## Safety and Maintenance

- In order to prevent damage to your device, be sure to keep it in its original box during transportation.
- The device must be used solely with its original power adapter. Please note that the adapter is 220V only. Do not use with 110V AC.
- Do not insert a PSTN (phone) plug into the LAN port.
- If you encounter any problems, do not open or disassemble the device. Call AirTies Technical Support.
- In order to prevent electric shock, do not operate the device in wet or damp areas.
- In the event of a gas leak, do not use the device. Do not turn the device on or off. Do not plug or unplug the power cord.
- Avoid using the device in dusty environments. If dust buildup should occur, use a dry cloth to remove the dust.

- To clean the exterior of the device use a dry cloth. Do not attempt to clean the interior. There are no user serviceable components inside.
- For information regarding the installation and configuration of the device consult the remainder of this manual.
- The average usage life of the device is 7 years as determined by the Authority of Industry and Trade.

## Status LEDs

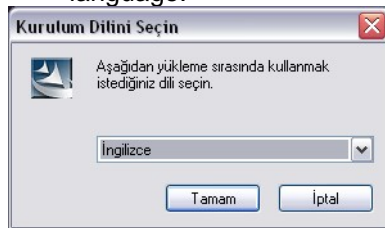
The following table describes the device activity that the LEDs indicate.

LED	LIGHT	STATUS
USB	GREEN	CONNECTED
USB	OFF	DISCONNECTED
WIRELESS NETWORK	GREEN (SOLID)	CONNECTED
WIRELESS NETWORK	GREEN (FLASHING)	DATA EXCHANGE
WIRELESS NETWORK	OFF	NOT CONNECTED

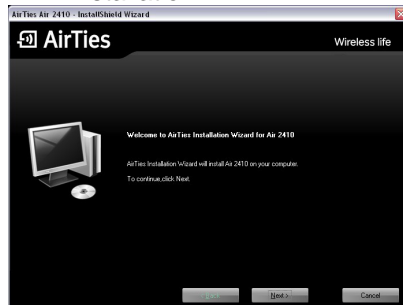
## Installation Settings

### Loading the driver

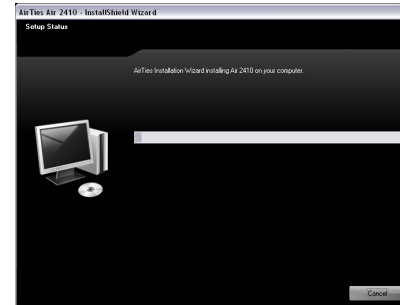
- Insert the CD provided into the CD drive of your computer. The InstallShield program will start automatically. First, select the installation language.



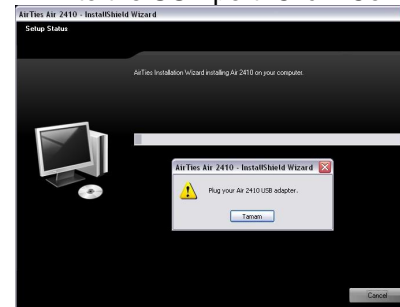
- Click "Next>" in the window that comes up to proceed with the installation.



- The installation program will start to load the driver for the AirTies Wireless USB Adapter.



- This may take a few minutes. If you haven't connected the AirTies Wireless USB Adapter, then you will be asked to connect your adapter to the USB port. Click "Continue" to resume the installation process.



- When the driver installation is done, the following screen will come up. Click "Finish" to complete the installation.



## Connecting to the Wireless Network

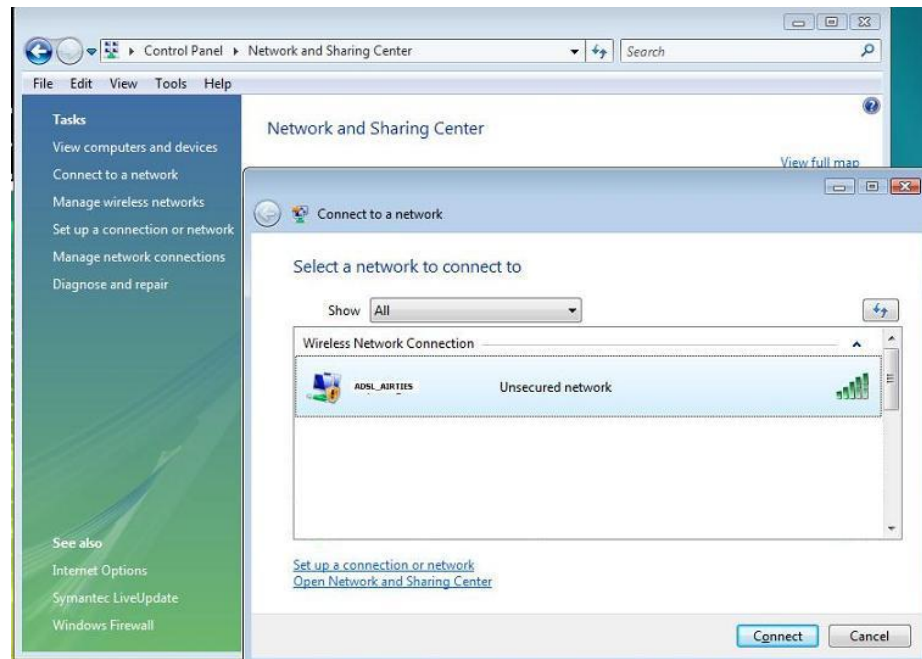
### Windows XP and Vista

To connect to a wireless network using the AirTies Wireless USB adapter, you need to use Windows Zero Config (WZC).

Click on the network adapter icon on the system tray to open the Wireless Configuration Program window.

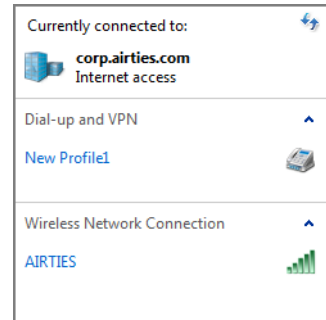


If the wireless network you would like to connect to is a security enabled network, enter the network key and click "Connect".



### Windows 7

Click on the network adapter icon on the system tray to open the Wireless Configuration Program window. Click your wireless network from the list and click Connect.

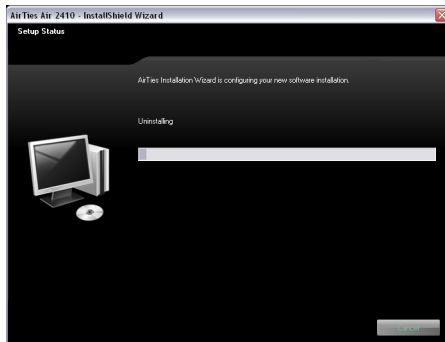


If prompted then press the button on the router. For AirTies devices this will be the AirTouch button.



### Uninstalling the driver

Go to Start->Programs->AirTies. Here, you will find the shortcut for uninstalling the driver for the AirTies USB adapter. When you click on this shortcut, the following screen will come up.



Click "Yes" to remove the device drivers from your computer.



## Device Properties

### Technical Specifications

- Wireless Standards: IEEE 802.11n, IEEE 802.11g, IEEE 802.11b
- Wireless Data Rates (Mbps): 1, 2, 5.5, 6, 9, 11, 12, 24, 36, 48, 54, 72, 144, 150, 300 Mbps (automatic speed adjustment)
- **Frequency Interval:**  
ETSI 2400 MHz(min) - 2483.5 MHz(max) ETSI 5180 MHz(min) - 5320 MHz(max)
- Maximum Transmit Power: 16 dBm EIRP
- Connection and wireless activity LEDs
- Wireless Security: WPA2, WPA, WEP, and 802.1x support
- Low Power Consumption Mode
- WMM (Wireless Multi Media) support
- DPT (Direct Packet Transmission) feature: full speed data exchange between clients without an access point
- Class 2 device

### Physical Characteristics

- Dimensions: 73 mm x 25.5 mm x 10.5 mm
- Weight: 15.81 grams
- Power: Over USB port
- Operating Temperatures: 0°C ~ 40°C
- Storage Temperature: -20°C ~ 70°C
- Humidity: %5 ~ %90 non-condensing